

## TP-LINK C1200

For Windows 10



### IMPORTANT MESSAGE

Your router has been pre-configured, you do not need to follow each step of the set-up guide but should retain this document in case you need to manually configure your equipment.

**To configure your PC/Laptop with your wireless password including changing your wireless password, please proceed to step 4.**

### Contents

1. Physical Connection
2. Network Configuration
3. Configuring Internet
4. Configuring WI-FI
5. Change of Password

### 1. PHYSICAL CONNECTION

Please refer to the Quick Installation Guide that came with your router.

**PLEASE NOTE:** Have your router powered on and connected directly to your PC via Ethernet Cable before you begin, as these instructions are based on wired Ethernet connection

### 2. NETWORK CONFIGURATION

PPPoE connection does not require you to have an IP address or DNS settings manually encoded on your network card.

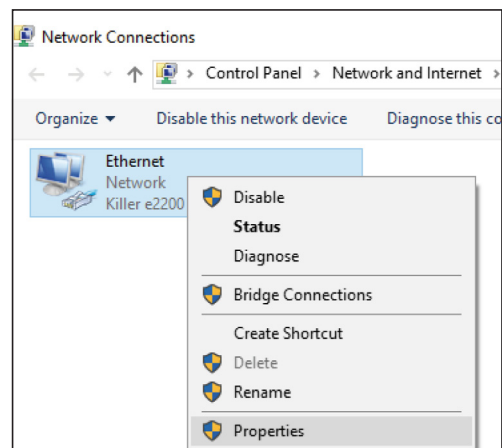
PPPoE connection uses authentication to establish the Internet connection and its after doing this that your router is assigned an IP and DNS settings from TPG.

To begin, your PC needs to receive a private IP address from the router. Most NBN routers have DHCP enabled by default that will take care of this.

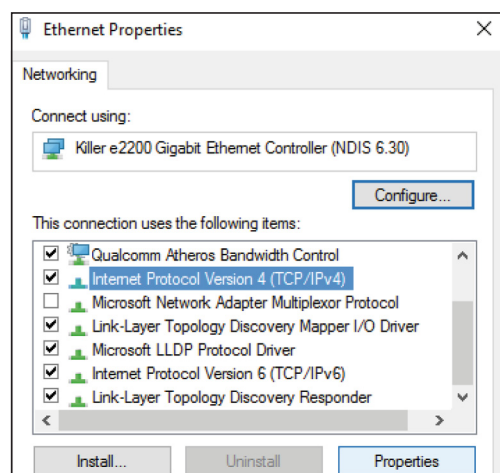
To ensure your Network Card is ready for this, please follow the following steps:

A. Click **Start -> Settings -> Network and Internet -> Ethernet -> Change adapter options**

B. Right click on Ethernet, and then click **Properties**



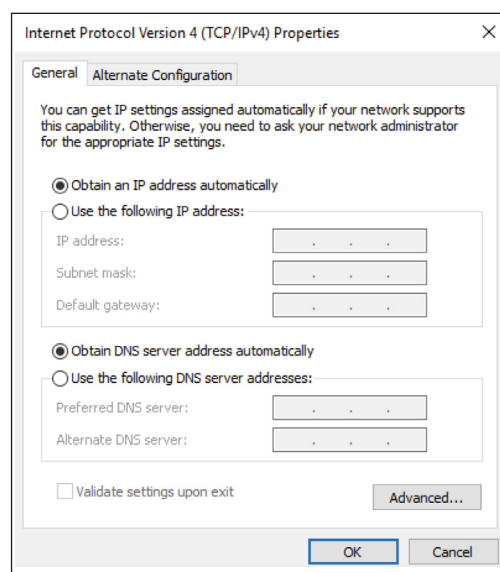
C. Under Ethernet properties, select **Internet Protocol Version 4 TCP/IP v4** and then click **Properties**



D. Ensure **“Obtain an IP address automatically”** is selected

E. Ensure **“Obtain DNS server address automatically”** is selected

F. Click **OK**

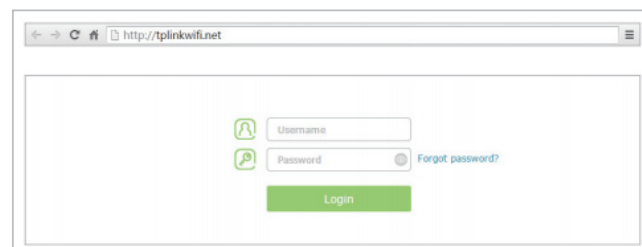


## 3. CONFIGURING ROUTER

A. Open your browser and in the address bar type

<http://tplinkwifi.net> or <http://192.168.1.1> and press **Enter**

B. Enter **admin** for both the username and password and click **Login**. If you have changed the login credentials, please enter the current username and password for your router interface.

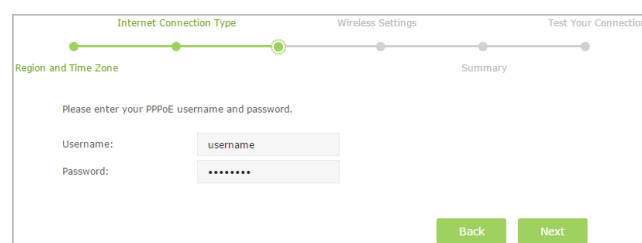


C. Click **Quick Setup** tab towards the top of the page.

D. Select your **Time Zone**, and click **Next**.

E. Click on **PPPoE**, and click **Next**.

F. Type in your own TPG **username** and **password**, and click **Next**.

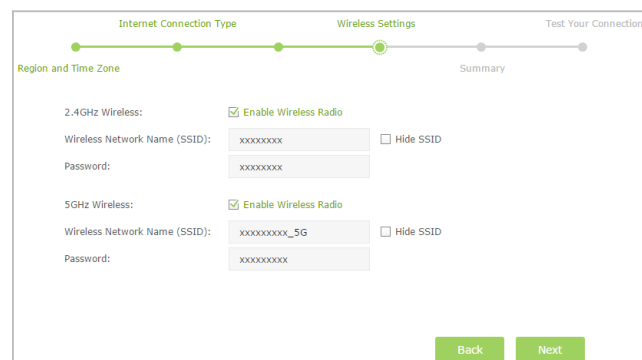


G. You can change your Wi-Fi settings in this step. By default, the router is configured with the following Wi-Fi security settings:

**SSID (name for the Wi-Fi connection):** TP-LINK\_XXXX (XXXX is a random 4 digit alpha numeric code)

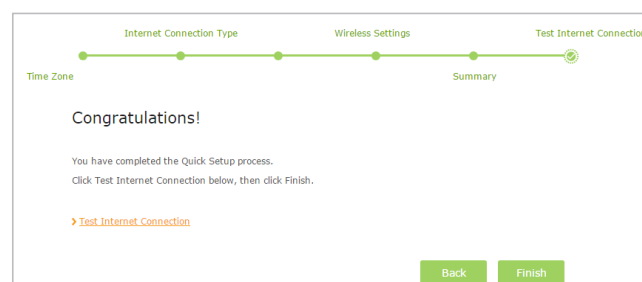
**Password:** By default, the password is printed on a sticker underneath your router (**Wireless Password/Pin**). You can enter your own text as an option.

Click **Next** to continue.



H. On the summary page click Save

Click **Finish** to complete the Quick Setup.



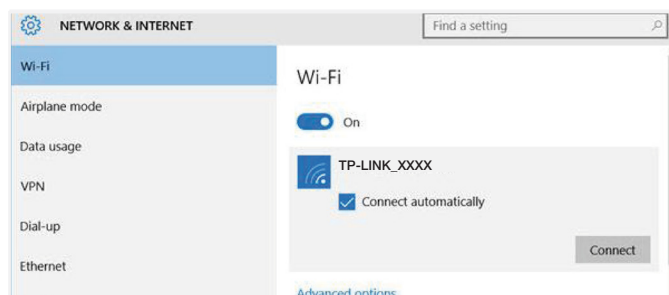
## 4. CONFIGURING WI-FI

To use Wi-Fi, ensure that you have already setup your wireless adapter on your PC/laptop.

A. Click **Start** -> **Settings** -> **Network and Internet**

B. Click **Wi-Fi** and then find the SSID (Network name) of your modem. By default, the network name should be **TP-LINK\_XXXX** (XXXX is a random 4 digit alpha numeric code).

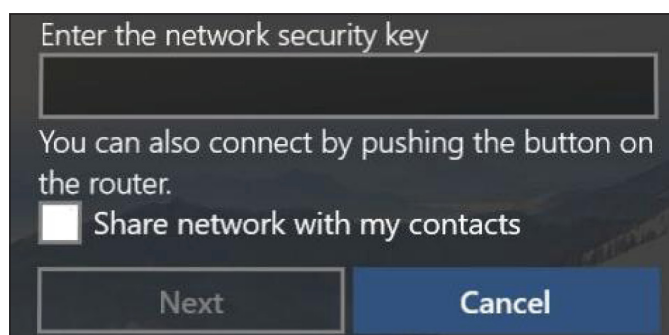
C. Ensure **Connect Automatically** is ticked, and then **Click Connect**.



D. You will now be prompted to enter your network **security key/ Wireless password**. By default, the password is printed on a sticker underneath your router (**Wireless Password/Pin**).

E. Click **NEXT** to finish.

**Note:** You'll see an option that says "share this network with my contacts". We recommend you don't tick this box.



F. You should now see your status as '**Connected**'.

## 5. CHANGE OF PASSWORD

For security purposes we highly recommend that you change your password if you are using your default or if you believe your password security has been compromised.

To change your password, first please visit [www.tpg.com.au/password](http://www.tpg.com.au/password)

Your new password will take approximately 10-15 minutes to take effect, after which you must reconfigure your new password in your router.

### PLEASE NOTE:

Each time your router is powered on, it will initialize this automated authentication process after which your router will receive a public IP address (fixed or dynamic depending on your plan) and DNS settings from TPG.