

HG658

Configuring in Layer2 PPPoE for Windows 7



IMPORTANT MESSAGE

Your modem has already been pre-configured, you do not need to follow each step of the set-up guide but should retain this document in case you need to manually configure your equipment.

To configure your PC/Laptop with your wireless password including changing your wireless password, please proceed to step 4.

Contents

1. Physical Connection
2. Network Configuration
3. Configuring Internet
4. Configuring Wireless
5. IPTV
6. Change of Password

1. PHYSICAL CONNECTION

Have your router powered on and connected directly to your PC via Ethernet Cable before you begin, as these instructions are based on wired Ethernet connection

2. NETWORK CONFIGURATION

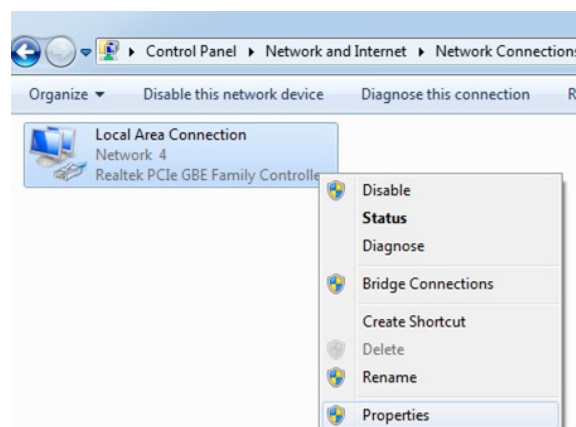
PPPoE connection does not require you to have an IP address or DNS settings manually encoded on your network card. PPPoE connection uses authentication to establish the Internet connection and once connected your modem will be assigned an IP and DNS settings from TPG.

To begin, your PC needs to receive a private IP address from the router. Most routers have DHCP enabled by default that will take care of this.

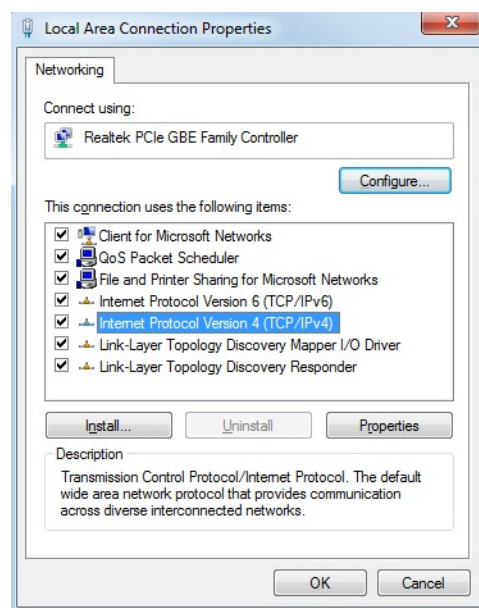
To ensure your Network Card is ready for this, please follow the following steps:

A. Click **Start -> Control Panel -> Network and Internet -> Network and Sharing Center -> Change adapter settings**

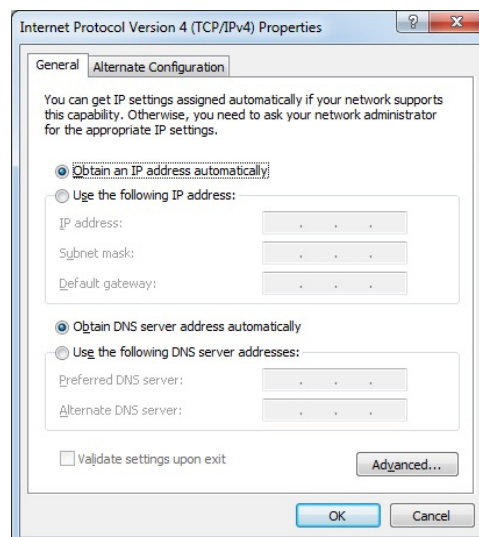
B. Right click on Local Area Connection and select **Properties**



- C. Click on **Internet Protocol Version 4 (TCP/IPv4)**, and then click **Properties**

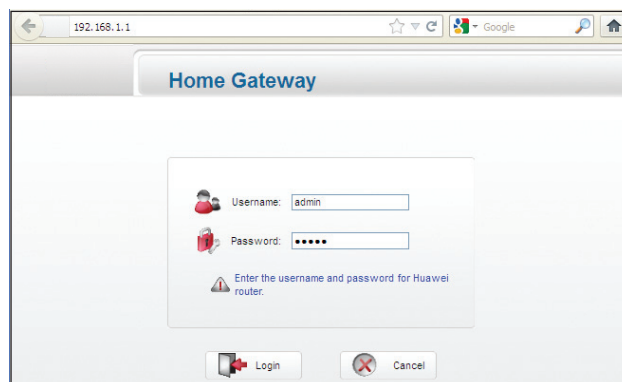


- D. Ensure “**Obtain an IP address automatically**” is selected
 E. Ensure “**Obtain DNS server address automatically**” is selected
 F. Click **OK**



3. CONFIGURING ROUTER

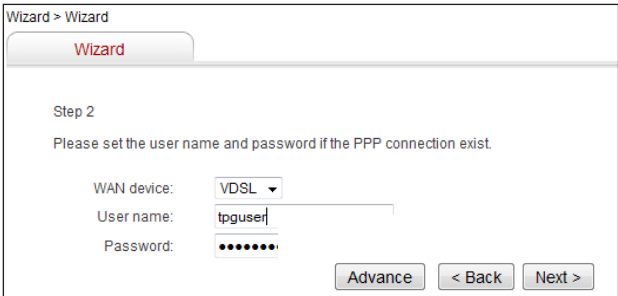
- A. Open your browser and in the address bar type **http://192.168.1.1** and press Enter
 B. Enter **admin** for both the username and password and click **Login**.
 If you have changed the login credentials, please enter the current username and password for your router interface.



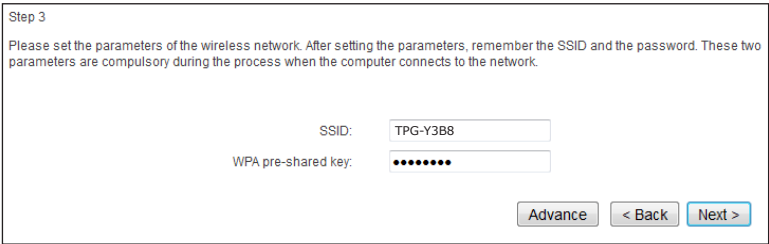
C. You will see the screen shown on the right. Click **Next**.



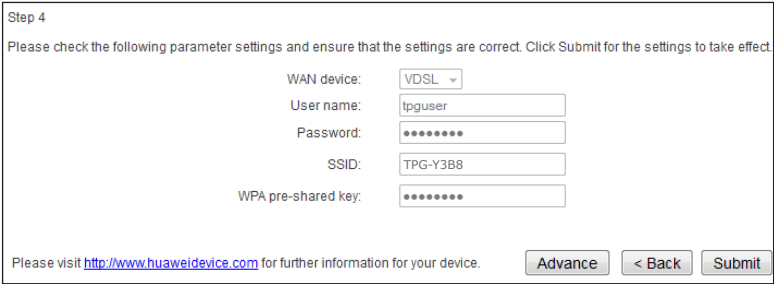
D. Enter your TPG **username** and **password**. Click **Next**.



E. You can change your WiFi details or elect to keep the default settings. The default WiFi SSID is printed on the sticker on the back of your modem. The WiFi password is set to your TPG password by default. Click **Next**.



F. Click **Submit**.
Quick Setup complete!



4. CONFIGURING WIRELESS

Things you need to know before you begin:

By default the modem that you purchased from TPG is configured with the following wireless security settings:

SSID (name for the wireless connection): TPG-xxxx (xxxx is a random 4 digit alphanumeric code printed on the sticker underneath your modem)

Authentication Type: WPA-PSK/WPA2-PSK

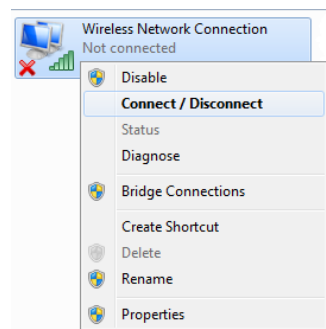
Encryption: TKIP/AES

Pre Shared Key: initially configured to be the same as your TPG password. You can enter your own text as an option.

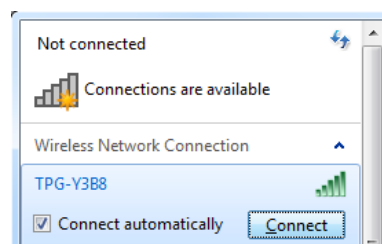
To use Wireless, ensure that you already have set up your wireless adapter.

A. Click **Start -> Control Panel -> Network and Internet -> Network and Sharing Center -> Change adapter settings**

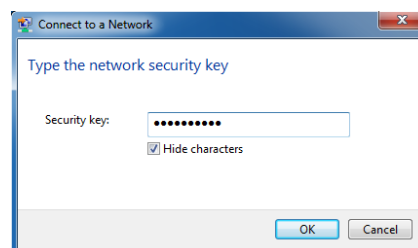
B. Right click on **Wireless Network Connection** and click '**Connect/Disconnect**'



C. Find the SSID (network name) of your router and click **Connect**. By the default, the network name should be **TPG-xxxx** (xxxx is a random 4 digit alpha numeric code).

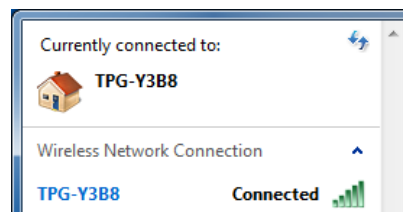


D. You will now be prompted to enter your **WPA Key / wireless** password. This is the same as your TPG password if you did not change it on the router.



E. Click **OK**.

F. You should now see your status as '**Connected**'.



5. IPTV

Your modem is pre-configured with TPG IPTV settings. Should you require further assistance please contact the TPG Helpdesk on **13 14 23** option **2**.

6. CHANGE OF PASSWORD

For security purposes we highly recommend that you change your password if you are using your default or if you believe your password security has been compromised. For password information, please visit www.tpg.com.au/support.

PLEASE NOTE:

Each time your router is powered on, it will initialize this automated authentication process after which your router will receive a public IP address (fixed or dynamic depending on your plan) and DNS settings from TPG.