

HG659 (NBN)

Configuring in Layer2 PPPoE for Windows 10



IMPORTANT MESSAGE

Your modem has already been pre-configured, you do not need to follow each step of the set-up guide but should retain this document in case you need to manually configure your equipment.

To configure your PC/Laptop with your wireless password including changing your wireless password, please proceed to step 4.

Contents

1. Physical Connection
2. Network Configuration
3. Configuring Modem
4. Configuring Wireless
5. Change of Password

1. PHYSICAL CONNECTION

Have your modem powered on and connected directly to your PC via Ethernet Cable before you begin, as these instructions are based on wired Ethernet connection

For further information, please see wiring diagram and instructions for your NBN connection type below.

- [NBN Fibre To The Node \(FTTN\)](#)
- [NBN Fibre To The Building \(FTTB\)](#)
- [NBN Fixed Wireless](#)
- [NBN Cable Broadband \(HFC\)](#)

2. NETWORK CONFIGURATION

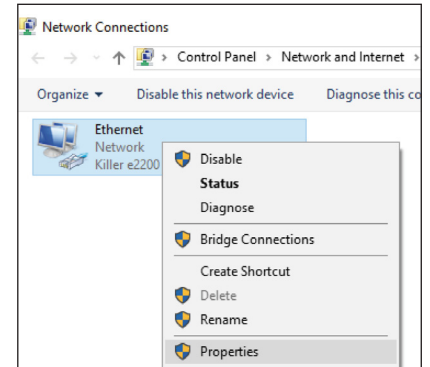
PPPoE connection does not require you to have an IP address or DNS settings manually encoded on your network card. PPPoE connection uses authentication to establish the Internet connection and once connected your modem will be assigned an IP and DNS settings from TPG.

To begin, your PC needs to receive a private IP address from the modem. Most modems have DHCP enabled by default that will take care of this.

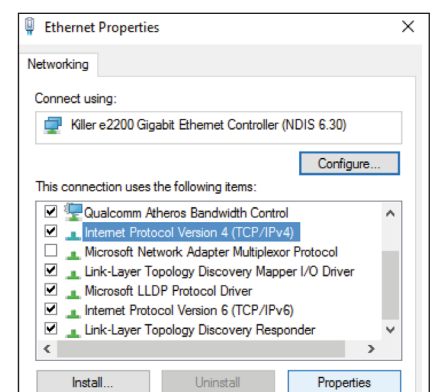
To ensure your Network Card is ready for this, please follow the following steps:

A. Click **Start -> Settings -> Network and Internet -> Ethernet -> Change adapter options**

B. Right click on Ethernet, and then click **Properties**



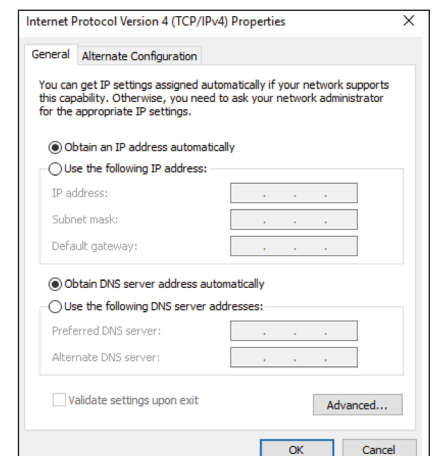
C. Under Ethernet properties, select **Internet Protocol Version 4 TCP/IP v4** and then click **Properties**



D. Ensure **“Obtain an IP address automatically”** is selected

E. Ensure **“Obtain DNS server address automatically”** is selected

F. Click **OK**



3. CONFIGURING MODEM

- A. Open your browser and in the address bar type **http://192.168.1.1** and press Enter
- B. Enter **admin** for both the username and password and click **Login**.
If you have changed the login credentials, please enter the current username and password for your modem interface.

Login

Username

admin

Password

.....

[How do I find the default login password?](#)

[Forgot password?](#)

Login

Status Information

- C. You will see the screen shown on the right.
Click **Start Wizard**.

I want to ...

Start Wizard



0 days 0 hours 0 minutes

Set Up WLAN



WLAN devices: 10

Check My Network Status



Connected devices: 0

- D. Enter your TPG **username** and **password**.
Click **Next**.

Select your Internet connection mode:

Connect automatically

Device will try to access the Internet automatically.

Connect with user account

A user account is required for PPPoE connections.

Please enter the username and password you received from your ISP

Internet account

tpguser

Internet password

.....

Show password☐

Connect with no user account

No user account is required for IPoE connections.

Connect with another modem

Bridge mode is best used in homes that have a modem already, or those that use a computer dial up connection to access the Internet.

Cancel

Next

E. You can change your WiFi details or elect to keep the default settings. The default WiFi SSID is **WiFi-xxxx** (xxxx is a random 4 digit alphanumeric code printed on the sticker underneath your modem). By default, the WiFi password is printed on a sticker underneath your modem (**WLAN Key**). Click **Save**.

2.4 GHz

WLAN 2.4 GHz SSID:

WiFi-9RWN

5 GHz

WLAN 5 GHz SSID:

WiFi-9RWN-5G

Encryption Settings:


Password:

.....

Show password☐

Save

Quick Setup complete!



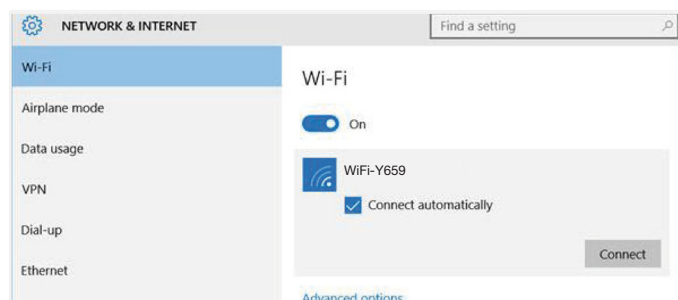
4. CONFIGURING WIRELESS

To use Wireless, ensure that you already have set up your wireless adapter.

A. Click **Start** -> **Settings** -> **Network and Internet**

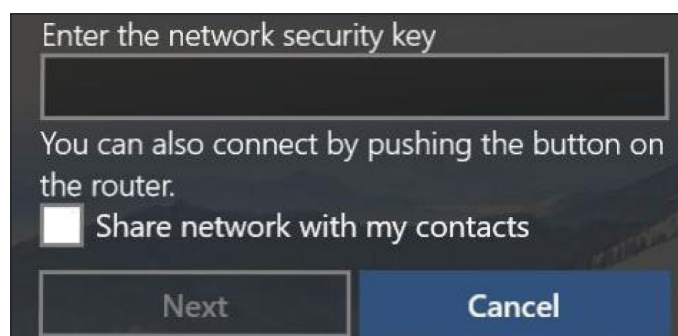
B. Click **Wi-Fi** and then find the SSID (Network name) of your modem. By default, the network name should be WiFi-xxxx (xxxx is a random 4 digit alpha numeric code).

Note: You may notice there are two wireless networks present. You may connect to either of these.



C. Ensure **Connect Automatically** is ticked, and then **Click Connect**.

D. You will now be prompted to enter your network **security key/ Wireless password**. By default, the WiFi password is printed on a sticker underneath your modem (**WLAN Key**).



E. Click **NEXT** to finish.

Note: You'll see an option that says "share this network with my contacts". We recommend you don't tick this box.

F. You should now see your status as '**Connected**'.

5. CHANGE OF PASSWORD

For security purposes we highly recommend that you change your password if you are using your default or if you believe your password security has been compromised. For password information, please visit www.tpg.com.au/support.

PLEASE NOTE:

Each time your modem is powered on, it will initialize this automated authentication process after which your modem will receive a public IP address (fixed or dynamic depending on your plan) and DNS settings from TPG.