

## HG658

### Configuring in Layer2 PPPoE for Windows 10



#### IMPORTANT MESSAGE

Your modem has already been pre-configured, you do not need to follow each step of the set-up guide but should retain this document in case you need to manually configure your equipment.

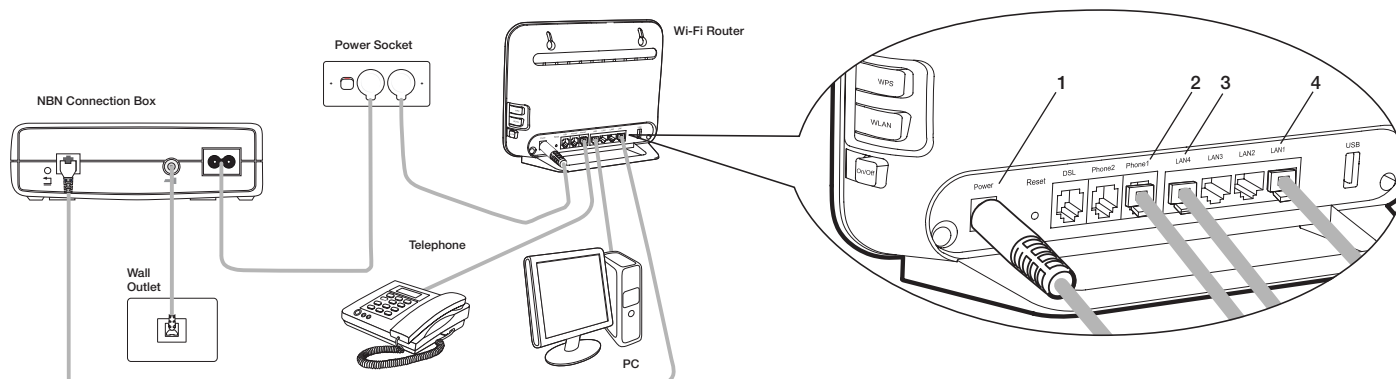
**To configure your PC/Laptop with your wireless password including changing your wireless password, please proceed to step 4.**

#### Contents

1. Physical Connection
2. Network Configuration
3. Configuring Modem
4. Configuring Wireless
5. Change of Password

#### 1. PHYSICAL CONNECTION

Have your modem powered on and connected directly to your PC via Ethernet Cable before you begin, as these instructions are based on wired Ethernet connection



1. Connect the Power port on the back of your modem to your power socket.
2. Connect your telephone handset to the Phone1 port on the back of your modem.
3. Connect your PC to any of the remaining 3 LAN ports on the back of your modem.
4. Connect the LAN 1 port on the back of the modem to the UNI-D port on the NBN connection box.

#### 2. NETWORK CONFIGURATION

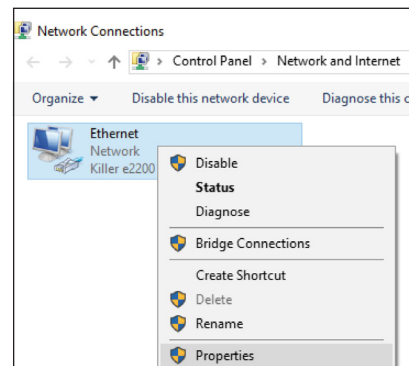
PPPoE connection does not require you to have an IP address or DNS settings manually encoded on your network card. PPPoE connection uses authentication to establish the Internet connection and once connected your modem will be assigned an IP and DNS settings from TPG.

To begin, your PC needs to receive a private IP address from the modem. Most modems have DHCP enabled by default that will take care of this.

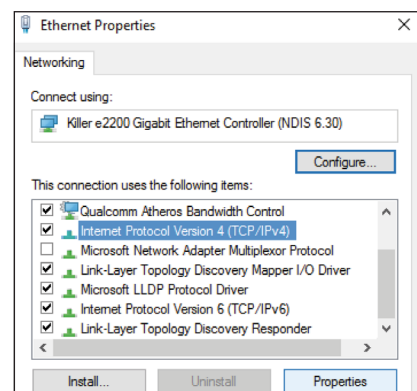
To ensure your Network Card is ready for this, please follow the following steps:

A. Click **Start -> Settings -> Network and Internet -> Ethernet -> Change adapter options**

B. Right click on Ethernet, and then click **Properties**



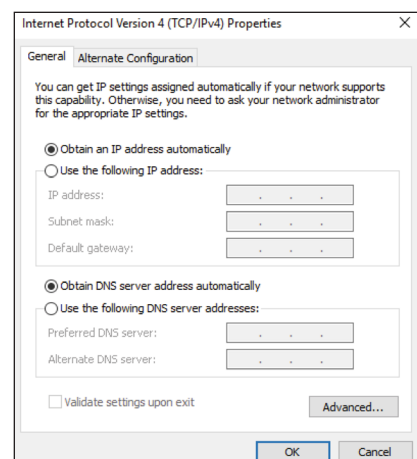
C. Under Ethernet properties, select **Internet Protocol Version 4 TCP/IP v4** and then click **Properties**



D. Ensure **“Obtain an IP address automatically”** is selected

E. Ensure **“Obtain DNS server address automatically”** is selected

F. Click **OK**



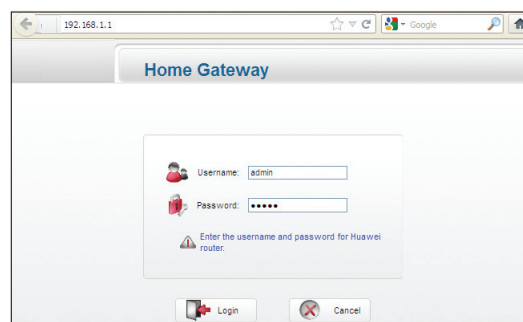
### 3. CONFIGURING MODEM

A. Open your browser and in the address bar type

**http://192.168.1.1** and press Enter

B. Enter **admin** for both the username and password and click **Login**.

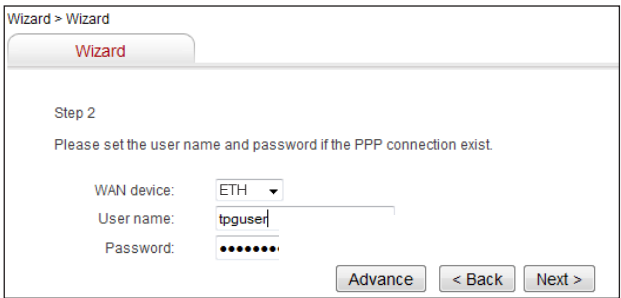
If you have changed the login credentials, please enter the current username and password for your modem interface.



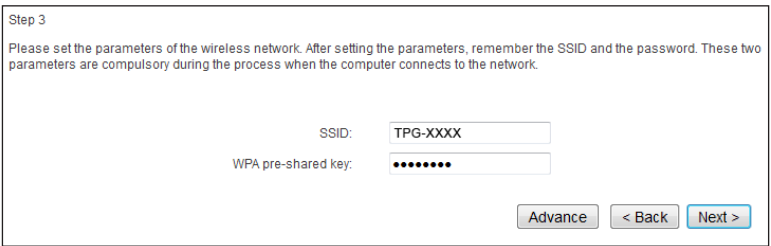
C. You will see the screen shown on the right. Click **Next**.



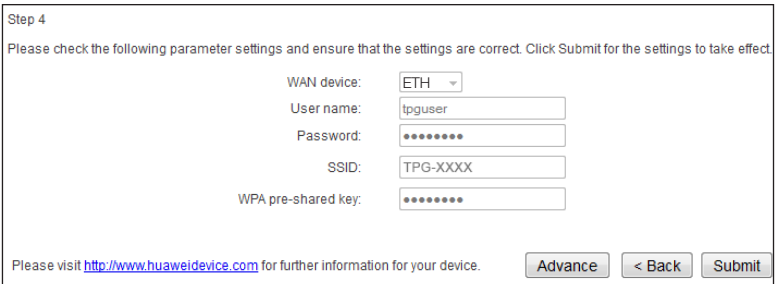
D. Enter your TPG **username** and **password**. Click **Next**.



E. You can change your WiFi details or elect to keep the default settings. The default WiFi SSID is TPG-xxxx (xxxx is a random 4 digit alphanumeric code printed on the sticker underneath your modem). The WiFi password is set to your TPG password by default. Click **Next**.



F. Click **Submit**.  
Quick Setup complete!



4. CONFIGURING WIRELESS

Things you need to know before you begin:

By default the modem that you purchased from TPG is configured with the following wireless security settings:

**SSID (name for the wireless connection):** TPG-xxxx (xxxx is a random 4 digit alphanumeric code printed on the sticker underneath your modem)

**Authentication Type:** WPA-PSK/WPA2-PSK

**Encryption:** TKIP/AES

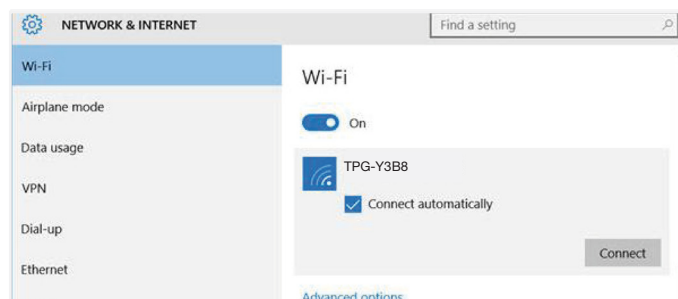
**Pre Shared Key:** initially configured to be the same as your TPG password. You can enter your own text as an option.

To use Wireless, ensure that you already have set up your wireless adapter.

A. Click **Start** -> **Settings** -> **Network and Internet**

B. Click **Wi-Fi** and then find the SSID (Network name) of your modem. By default, the network name should be TPG-xxxx (xxxx is a random 4 digit alpha numeric code).

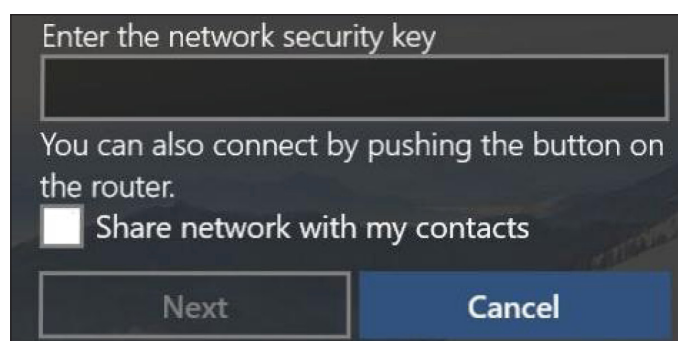
C. Ensure **Connect Automatically** is ticked, and then **Click Connect**.



D. You will now be prompted to enter your network **security key/ Wireless password**. This is the same as your TPG password if you did not change it on the modem.

E. Click **NEXT** to finish.

**Note:** You'll see an option that says "share this network with my contacts". We recommend you don't tick this box.



F. You should now see your status as '**Connected**'.

## 5. CHANGE OF PASSWORD

For security purposes we highly recommend that you change your password if you are using your default or if you believe your password security has been compromised. For password information, please visit [www.tpg.com.au/support](http://www.tpg.com.au/support).

### PLEASE NOTE:

Each time your modem is powered on, it will initialize this automated authentication process after which your modem will receive a public IP address (fixed or dynamic depending on your plan) and DNS settings from TPG.